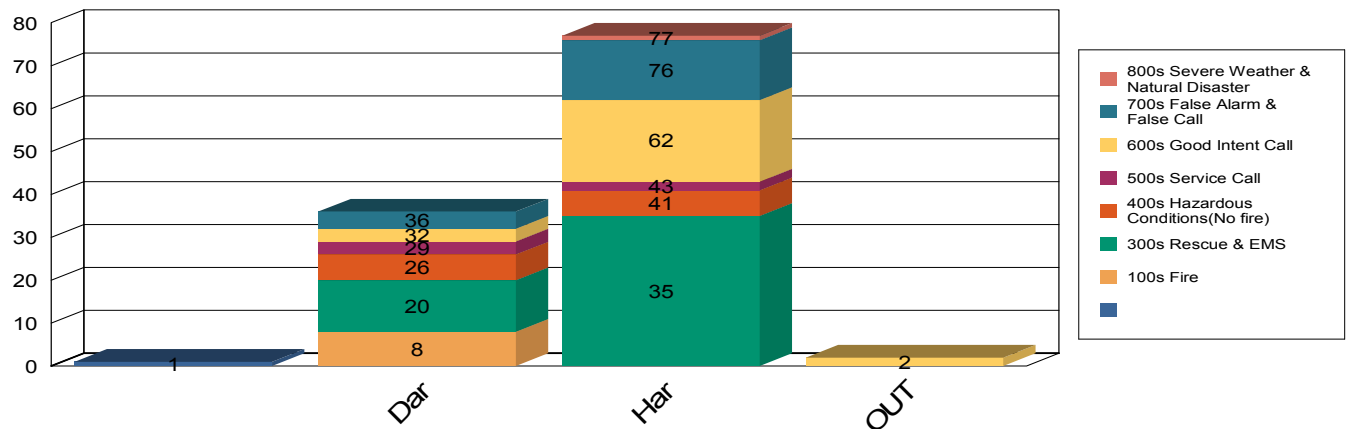




## Hartsville Fire Incident Report September 2016



*Graphed Items are sorted by District and Incident Type*

### Hartsville

#### Type Of Incident:

Type Of Incident:	Total Of Incidents:	Percentage Value:
300 Series-Rescue & EMS	35	30.17%
400 Series-Hazardous Conditions(No fire)	6	5.17%
500 Series-Service Call	2	1.72%
600 Series-Good Intent Call	19	16.38%
700 Series-False Alarm & False Call	14	12.07%
800 Series-Severe Weather & Natural Disaster	1	0.86%

**Total Incidents for Hartsville: 77**

### Darlington

#### Type Of Incident:

Type Of Incident:	Total Of Incidents:	Percentage Value:
100 Series-Fire	8	6.90%
300 Series-Rescue & EMS	12	10.34%
400 Series-Hazardous Conditions(No fire)	6	5.17%
500 Series-Service Call	3	2.59%
600 Series-Good Intent Call	3	2.59%
700 Series-False Alarm & False Call	4	3.45%

**Total Incidents for Darlington: 36**

### Out of District

#### Type Of Incident:

Type Of Incident:	Total Of Incidents:	Percentage Value:
600 Series-Good Intent Call	2	1.72%

**Total Incidents for Out of District: 2**

### District Not Specified

#### Type Of Incident:

Type Of Incident:	Total Of Incidents:	Percentage Value:
	1	0.86%

**Total Incidents for District Not Specified: 1**

**Grand Total: 116**

**Type Of Incident Most Frequent: 300 Series-Rescue & EMS**