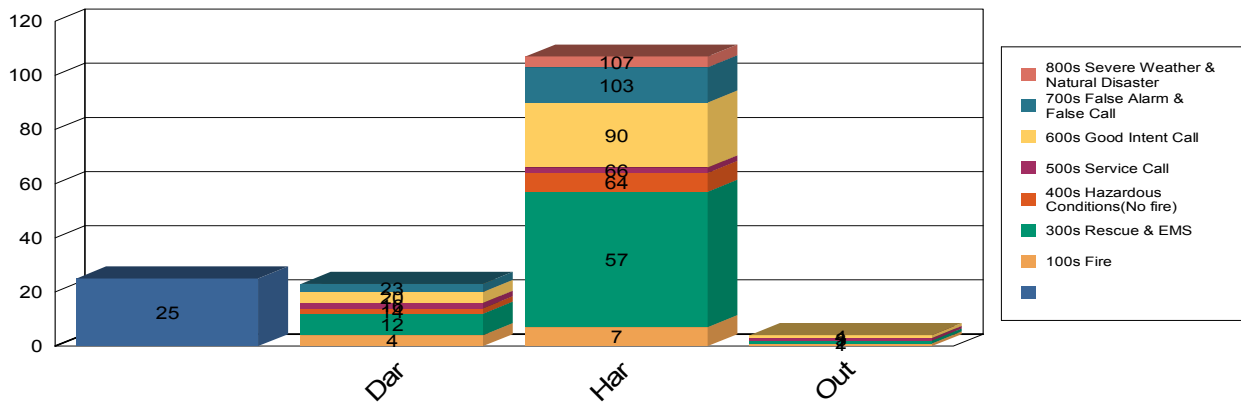




Hartsville Fire Incident Report September 2016



Graphed Items are sorted by District and Incident Type

Hartsville

Type Of Incident:	Total Of Incidents:	Percentage Value:
100 Series-Fire	7	4.40%
300 Series-Rescue & EMS	50	31.45%
400 Series-Hazardous Conditions(No fire)	7	4.40%
500 Series-Service Call	2	1.26%
600 Series-Good Intent Call	24	15.09%
700 Series-False Alarm & False Call	13	8.18%
800 Series-Severe Weather & Natural Disaster	4	2.52%
Total Incidents for Hartsville:	107	

Darlington

Type Of Incident:	Total Of Incidents:	Percentage Value:
100 Series-Fire	4	2.52%
300 Series-Rescue & EMS	8	5.03%
400 Series-Hazardous Conditions(No fire)	2	1.26%
500 Series-Service Call	2	1.26%
600 Series-Good Intent Call	4	2.52%
700 Series-False Alarm & False Call	3	1.89%
Total Incidents for Darlington:	23	

Out of District

Type Of Incident:	Total Of Incidents:	Percentage Value:
100 Series-Fire	1	0.63%
300 Series-Rescue & EMS	1	0.63%
500 Series-Service Call	1	0.63%
600 Series-Good Intent Call	1	0.63%
Total Incidents for Out of District:	4	

District Not Specified

Type Of Incident:	Total Of Incidents:	Percentage Value:
	25	15.72%
Total Incidents for District Not Specified:	25	

Grand Total: 159

Type Of Incident Most Frequent: 300 Series-Rescue & EMS