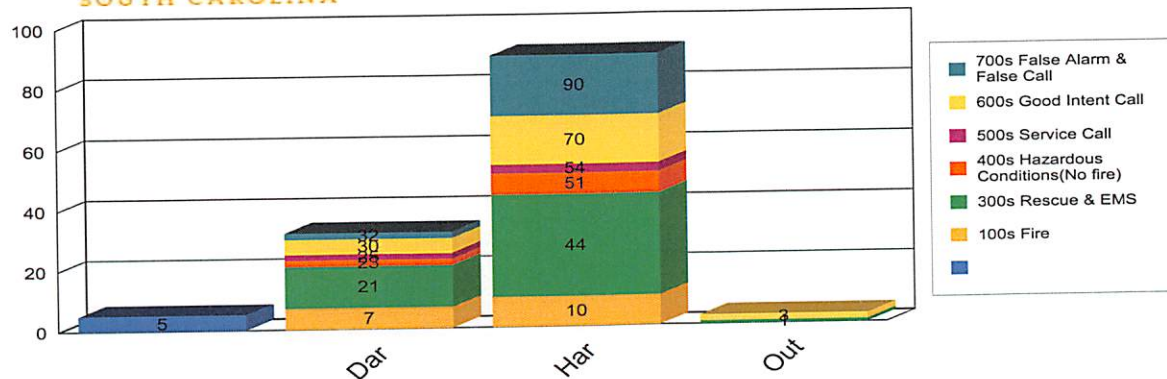




## Hartsville Fire Incident Report December 2016



Graphed Items are sorted by District and Incident Type

### Hartsville

#### Type Of Incident:

Type Of Incident:	Total Of Incidents:	Percentage Value:
100 Series-Fire	10	7.69%
300 Series-Rescue & EMS	34	26.15%
400 Series-Hazardous Conditions(No fire)	7	5.38%
500 Series-Service Call	3	2.31%
600 Series-Good Intent Call	16	12.31%
700 Series-False Alarm & False Call	20	15.38%
<b>Total Incidents for Hartsville:</b>	<b>90</b>	

### Darlington

#### Type Of Incident:

Type Of Incident:	Total Of Incidents:	Percentage Value:
100 Series-Fire	7	5.38%
300 Series-Rescue & EMS	14	10.77%
400 Series-Hazardous Conditions(No fire)	2	1.54%
500 Series-Service Call	2	1.54%
600 Series-Good Intent Call	5	3.85%
700 Series-False Alarm & False Call	2	1.54%
<b>Total Incidents for Darlington:</b>	<b>32</b>	

### Out of District

#### Type Of Incident:

Type Of Incident:	Total Of Incidents:	Percentage Value:
300 Series-Rescue & EMS	1	0.77%
600 Series-Good Intent Call	2	1.54%
<b>Total Incidents for Out of District:</b>	<b>3</b>	

### District Not Specified

#### Type Of Incident:

Type Of Incident:	Total Of Incidents:	Percentage Value:
	5	3.85%
<b>Total Incidents for District Not Specified:</b>	<b>5</b>	

**Grand Total:** 130

**Type Of Incident Most Frequent:** 300 Series-Rescue & EMS