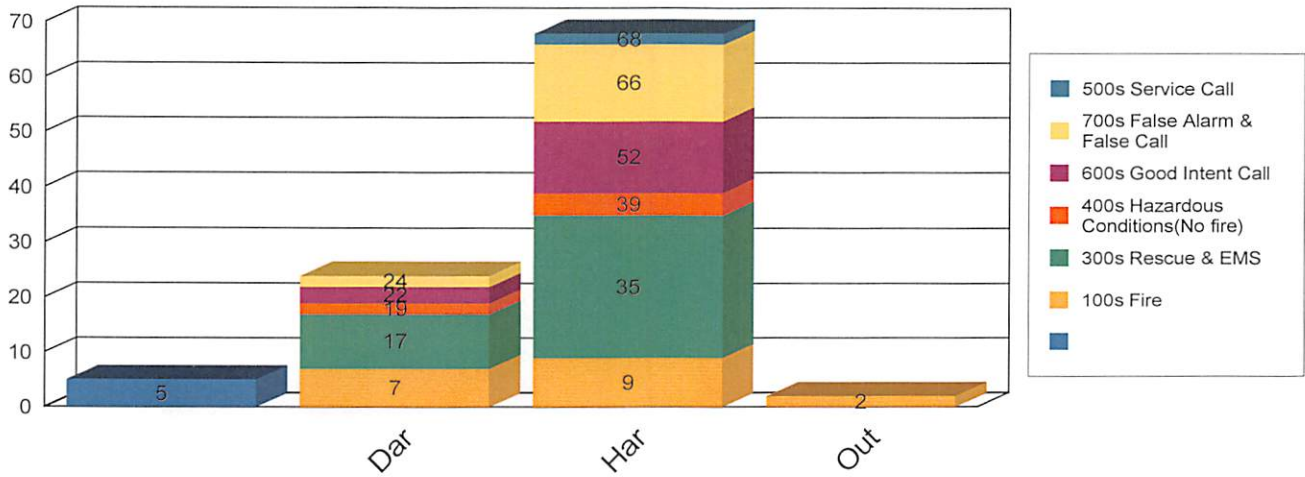




Hartsville Fire Incident Report January 2017



Graphed Items are sorted by District and Incident Type

Hartsville

Type Of Incident:

100 Series-Fire
300 Series-Rescue & EMS
400 Series-Hazardous Conditions(No fire)
500 Series-Service Call
600 Series-Good Intent Call
700 Series-False Alarm & False Call

Total Of Incidents:

9
26
4
2
13
14

Percentage Value:

9.09%
26.26%
4.04%
2.02%
13.13%
14.14%

Total Incidents for Hartsville: 68

Darlington

Type Of Incident:

100 Series-Fire
300 Series-Rescue & EMS
400 Series-Hazardous Conditions(No fire)
600 Series-Good Intent Call
700 Series-False Alarm & False Call

Total Of Incidents:

7
10
2
3
2

Percentage Value:

7.07%
10.10%
2.02%
3.03%
2.02%

Total Incidents for Darlington: 24

Out of District

Type Of Incident:

100 Series-Fire

Total Of Incidents:

2

Percentage Value:

2.02%

Total Incidents for Out of District: 2

District Not Specified

Type Of Incident:

100 Series-Fire

Total Of Incidents:

5

Percentage Value:

5.05%

Total Incidents for District Not Specified: 5

Grand Total: 99

Type Of Incident Most Frequent: 300 Series-Rescue & EMS