

**Monthly Departmental Report: Environmental Services**



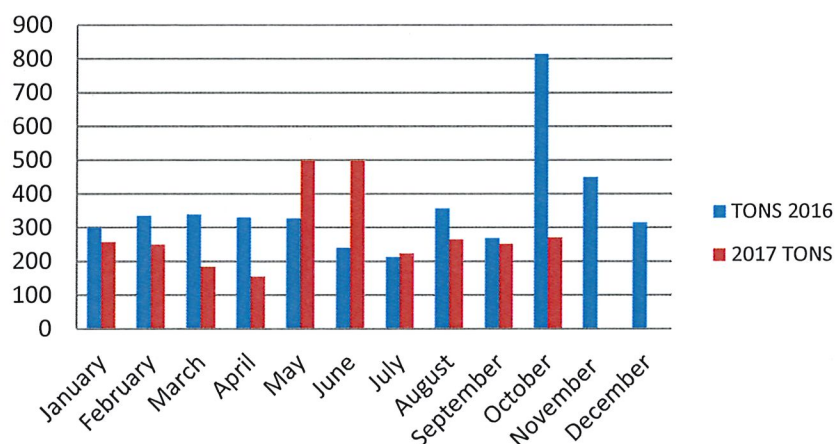
**OCTOBER  
2017**

# Departmental Report: Environmental Services

## Yard Debris 2017

MONTH	TONS 2016	2016 TRIPS	2017 TONS	2017 TRIPS	TONNAGE	TRIP
					GAIN/LOSS	GAIN/LOSS
January	299.67	73	256.42	58	43.25-	15-
February	334.87	90	249.64	61	85.23-	29-
March	338.59	95	183.63	42	154.96-	53-
April	329.47	92	154.19	31	175.28-	61
May	327.01	83	498.85	110	171.84+	27+
June	240.04	71	498.61	107	258.57+	36
July	212.65	63	222.84	52	10.19+	11-
August	356.05	97	264.62	72	91.43-	25-
September	268.47	72	251.4	68	17.07-	4-
October	814.01	168	270.45	76	543.56-	92-
November	449.24	145				
December	314.33	75				
TOTALS	4284.4	1124				

## YARD DEBRIS 2017



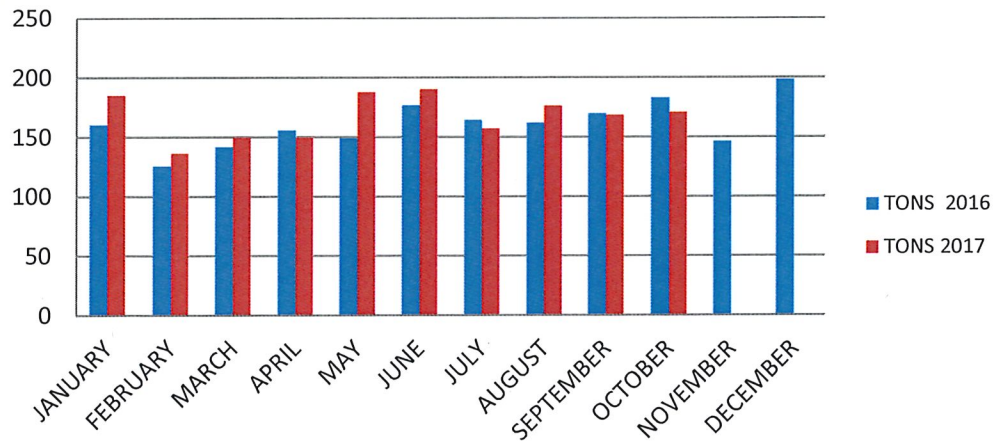
October 2016 included debris from Hurricane Matthew.

Departmental Report: Environmental Services

**RESIDENTIAL GARBAGE 2017**

<u>MONTH</u>	<u>TONS 2016</u>	<u>TONS 2017</u>	<u>GAIN/LOSS</u>
JANUARY	160.24	184.91	24.67+
FEBRUARY	125.57	136.31	10.74+
MARCH	141.61	149.85	8.24+
APRIL	155.54	149.63	5.91-
MAY	149.03	187.65	38.62+
JUNE	176.57	190.12	13.55+
JULY	164.28	157.09	7.19-
AUGUST	161.77	176.02	14.25+
SEPTEMBER	169.59	168.2	1.39-
OCTOBER	182.8	170.78	12.02-
NOVEMBER	146.2		
DECEMBER	198.14		
TOTALS	1931.34		

**RESIDENTIAL GARBAGE 2017**

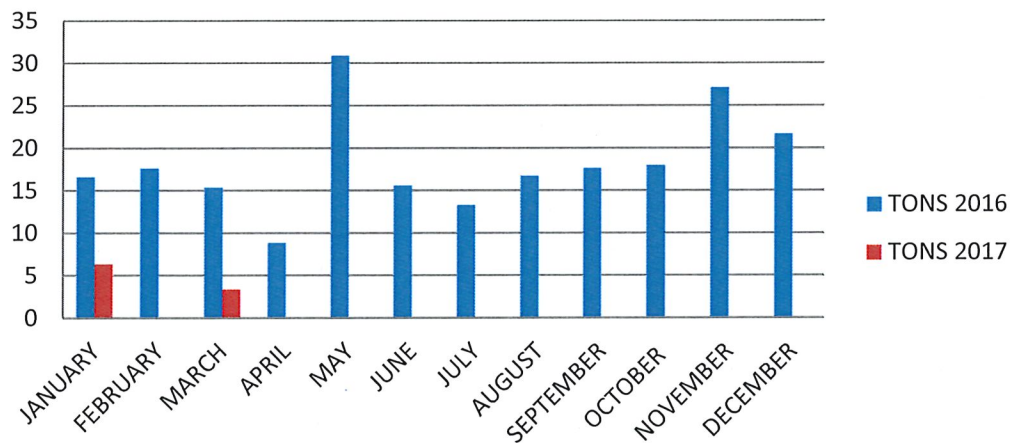


# Departmental Report: Environmental Services

## OCC #11 2017

MONTH	TONS 2016	TONS 2017	GAIN/LOSS
JANUARY	16.59	6.35	10.24
FEBRUARY	17.59	0	17.59-
MARCH	15.33	3.37	11.96-
APRIL	8.82		
MAY	30.86		
JUNE	15.58		
JULY	13.26		
AUGUST	16.69		
SEPTEMBER	17.62		
OCTOBER	17.93		
NOVEMBER	27.1		
DECEMBER	21.63		
TOTALS	219		

## OCC #11 2017



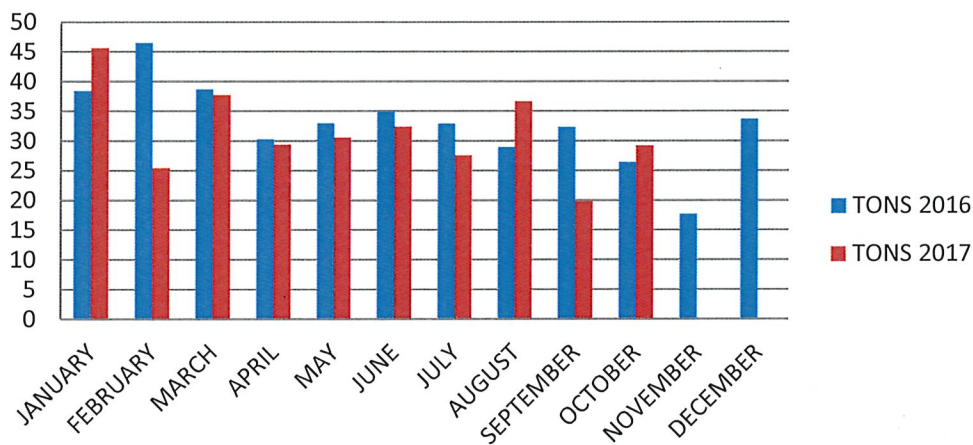
\* Collection service suspended at the end of January. We have not had a full truck as of 3.2.17. Only servicing 6 dumpsters in the downtown area.

Departmental Report: Environmental Services

COMMINGLE MRF 2017

<u>MONTH</u>	<u>TONS 2016</u>	<u>TONS 2017</u>	<u>GAIN/LOSS</u>
JANUARY	38.38	45.61	7.23+
FEBRUARY	46.46	25.41	21.05-
MARCH	38.66	37.72	.94-
APRIL	30.25	29.37	.88-
MAY	32.97	30.54	2.43-
JUNE	34.91	32.36	2.55-
JULY	32.89	27.51	5.38-
AUGUST	28.91	36.65	7.74+
SEPTEMBER	32.29	19.74	12.55-
OCTOBER	26.4	29.2	2.8+
NOVEMBER	17.64		
DECEMBER	33.65		
TOTALS	393.41		

COMMINGLE MRF 2017





Departmental Report: Environmental Services						
COMMERCIAL GARBAGE 2017						
MONTH	TONS 2016	TONS 2017	GAIN/LOSS			
JANUARY	294.03	364.35	70.32+			
FEBRUARY	279.1	304.72	25.62+			
MARCH	345.86	351.88	6.02+			
APRIL	329.53	329.99	.46+			
MAY	378.65	364.83	13.82-			
JUNE	283.85	307.68	23.83+			
JULY	276.53	304.81	28.28+			
AUGUST	344.17	361.23	17.06+			
SEPTEMBER	329.21	356.86	27.65+			
OCTOBER	339.5	346.38	6.88+			
NOVEMBER	311.59					
DECEMBER	307.85					
TOTALS	3819.87					

COMMERCIAL GARBAGE 2017

