

Part II Photographs – 10/2/2019
Hartsville Armory
559 West Carolina Ave. Hartsville, SC



Photo 1 – North façade



Photo 2 – West end of north façade, original windows and window pattern



Photo 3 – West elevation with deck on administrative wing



Photo 4 – West elevation of drill hall with replacement windows



Photo 5 – West elevation looking north



Photo 6 – Southwest oblique



Photo 7 – South elevation



Photo 8 – South end of east elevation



Photo 9 – North end of east elevation



Photo 10 – East elevation of administrative wing



Photo 11 – Rear garage, north elevation



Photo 12 – Main entrance with portal and c.1981 awning



Photo 13 – Double door entrance at southeast corner



Photo 14 – Paired casement windows, west elevation

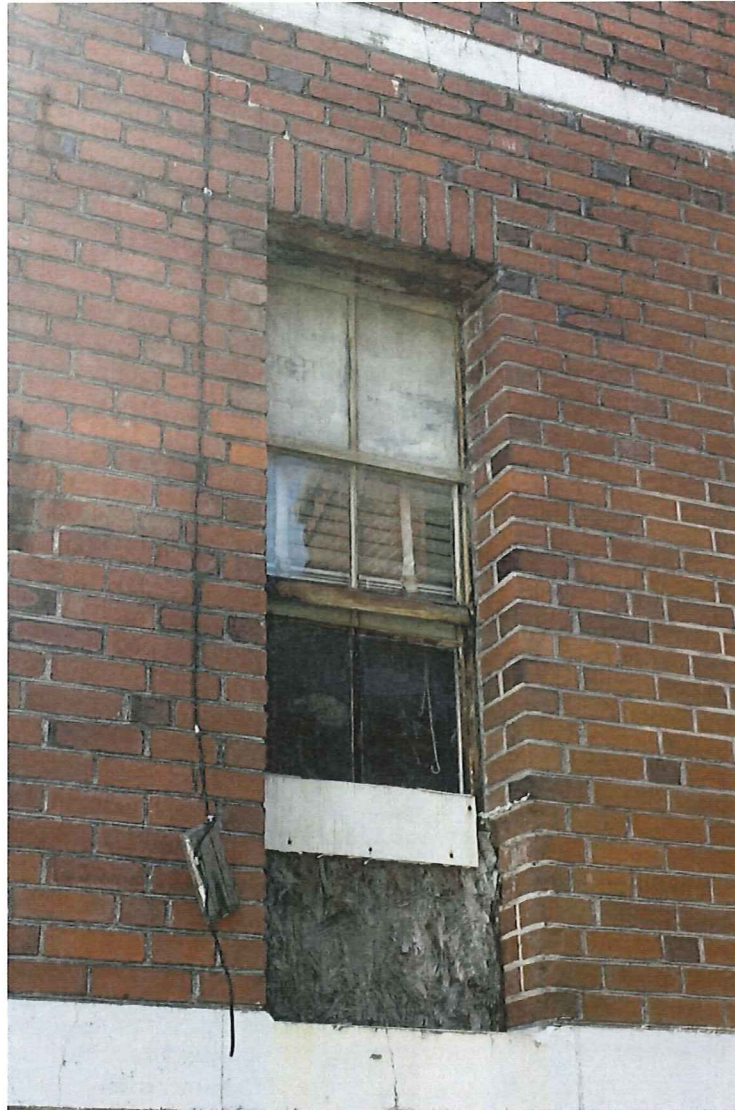


Photo 15 – Deteriorated original eight-light window



Photo 16 – Replacement window at rear stage, southwest corner



Photo 17 – Post-1994 replacement windows, drill hall



Photo 18 – Front parapet with saw-tooth corbelling and cast stone coping



Photo 19 – Garage door at southwest corner



Photo 20 – Siren at southwest corner of building



Photo 21 – Gooseneck lamp



Photo 22 – Southwest corner of garage



Photo 23 – East elevation of garage



Photo 24 – In-filled window of garage



Photo 25 – Pedestrian door to garage with gooseneck light



Photo 26 – Front entrance, interior



Photo 27 – Stairs

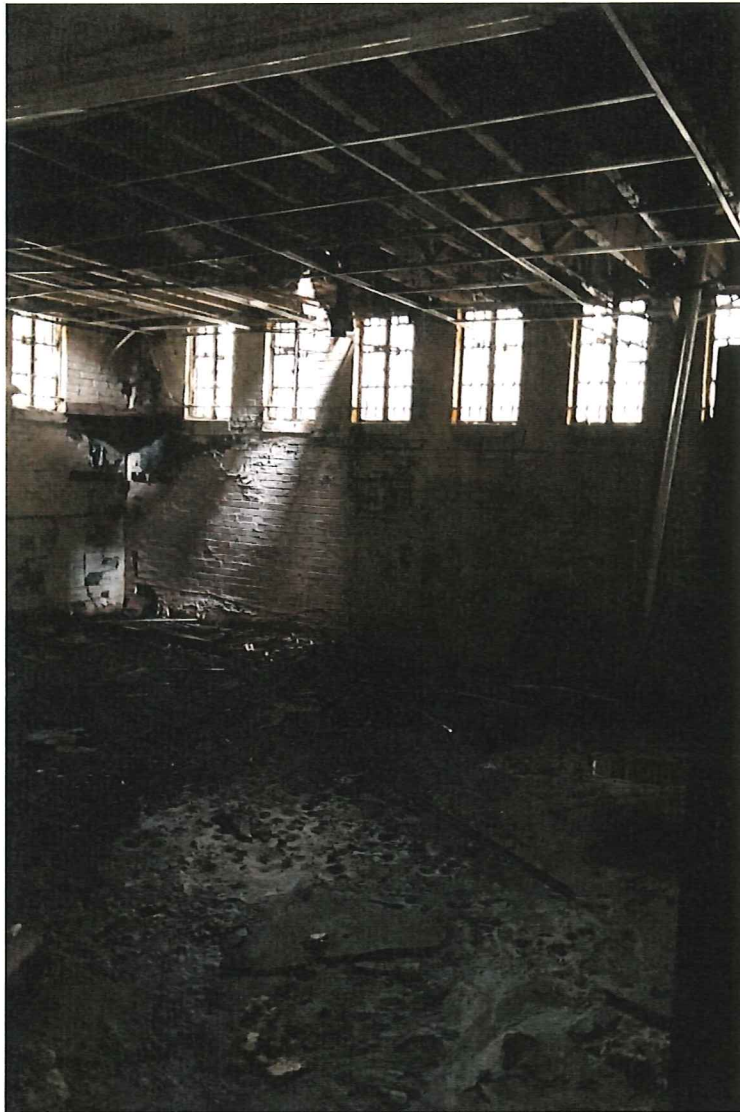


Photo 28 – Northwest corner of administrative section, first floor, looking northwest

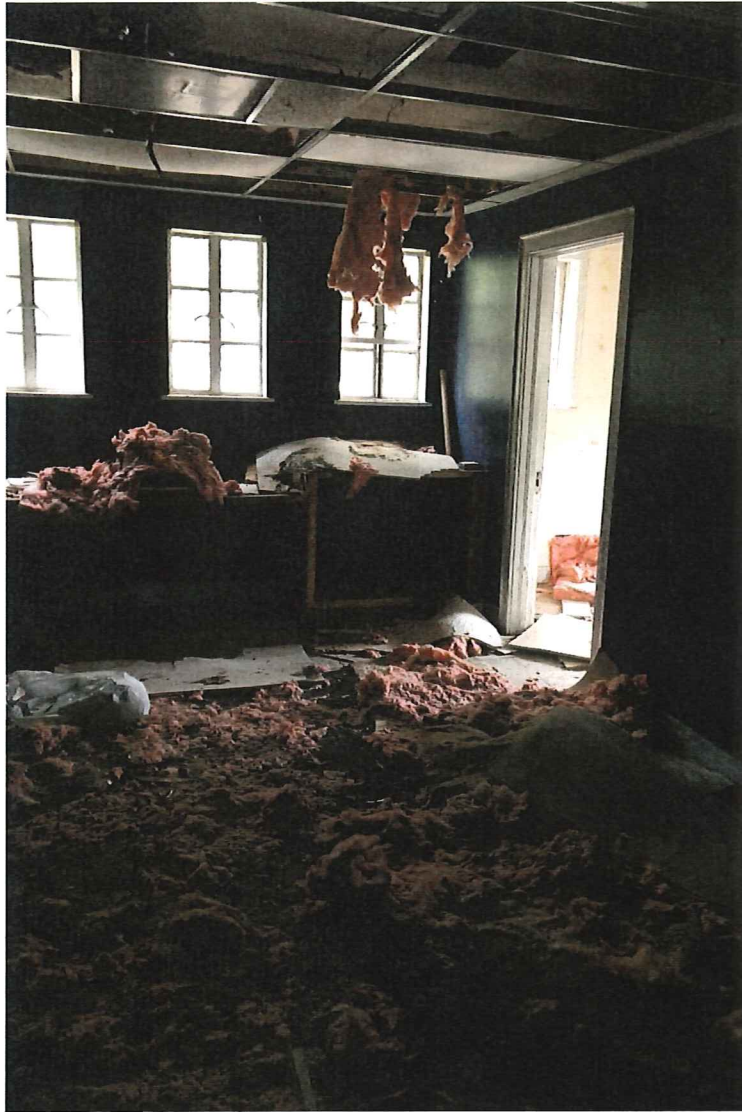


Photo 29 – Second floor office, looking north



Photo 30 – Second level deterioration in corridor

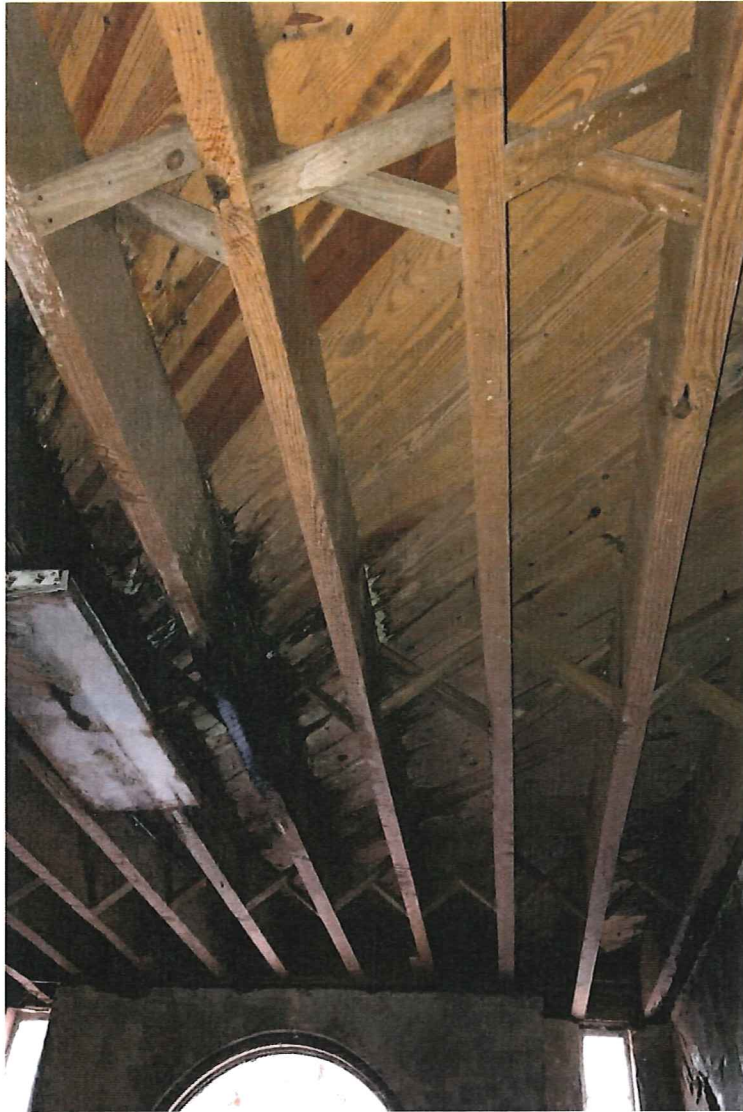


Photo 31 – Missing ceiling of entry lobby

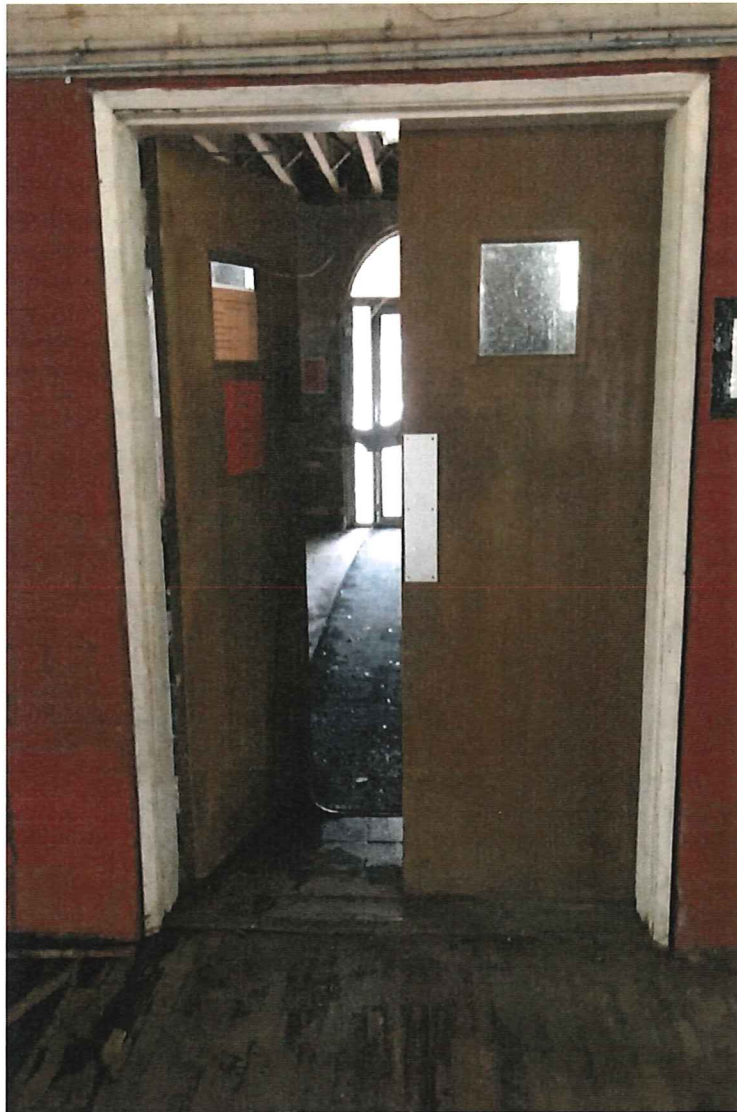


Photo 32 – Doors to drill hall



Photo 33 – Second level deterioration

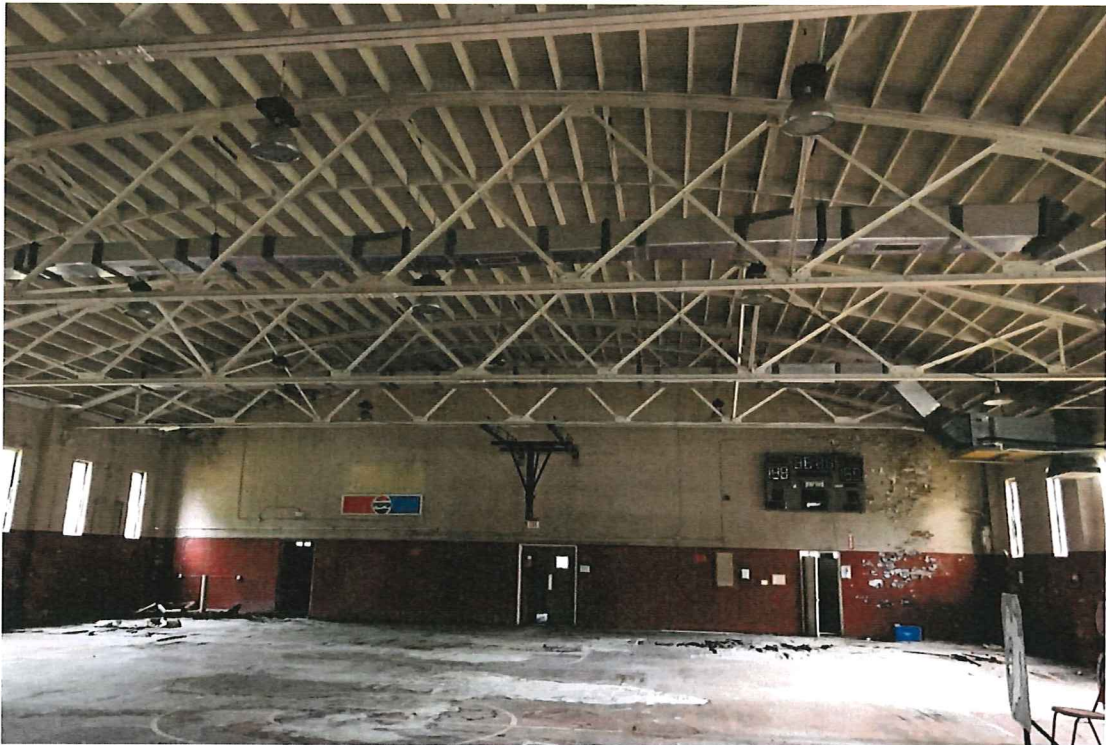


Photo 34 – Drill hall looking north



Photo 35 – Drill hall with garage door, looking southwest



Photo 36 – Deteriorated c.1981 floor, drill hall



Photo 37 – Exposed trusses in drill hall



Photo 38 – HVAC unit penetrating wall, drill hall looking east

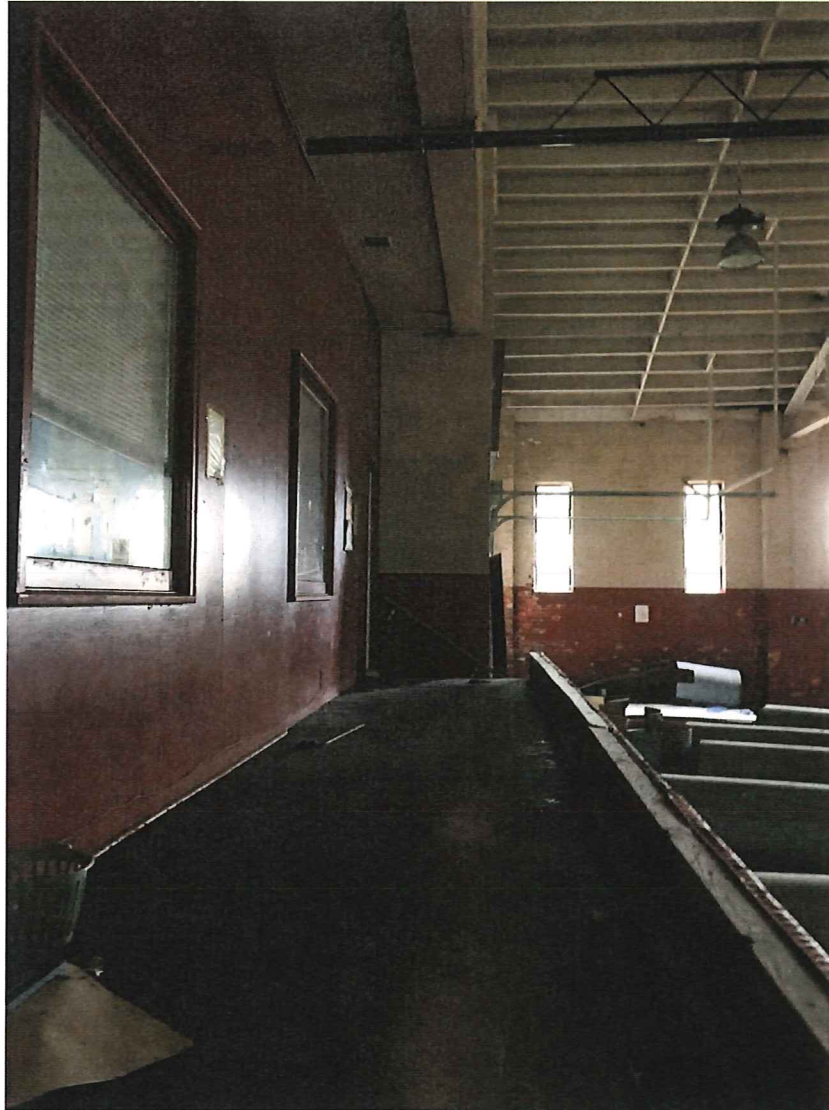


Photo 39 – South end of drill hall at stage, looking west